

Wyandotte Creek Subbasin Advisory (WAC) Committee Correspondence

Begin forwarded message:

From: Paul Gosselin

General Plans in the Plan Area

Wyandotte Creek subbasin is subject to the Butte County General Plan 2030 and the City of Oroville General Plan. In 2018, the Camp Fire destroyed 18,000 structures in Butte County displacing over 27,000 residents. In 2020, the North Complex Fire destroyed homes in Berry Creek, Feather Falls and other areas. While the Town of Paradise, Concow, Berry Creek and other impacted areas rebuild, many residents have relocated to other parts of Butte County. The existing General Plans may not fully account for the relocation of Camp Fire survivors. A focused accounting of changes to residential land use as a result of the Camp Fire should be conducted.

Butte County General Plan 2030

The Butte County General Plan 2030 was adopted by the Butte County Board of Supervisors in October 2010. The General Plan 2030 identifies the goals, policies and actions governing land use in the unincorporated portions of Butte County. The General Plan 2030 reflects the community desire to conserve and enhance the legacy of their forebears, namely, sustainable development. To this end, the General Plan 2030 envisions and supports a Butte County in 2030 where:

- Urban development will be primarily centralized within and adjacent to the existing municipal limits and larger unincorporated communities. Urban development will have efficient, reliable public facilities and infrastructure. Employment centers and a range of services will be located near residential areas so that people spend less time in their cars. Residential communities will be walkable, bicycle facilities will be provided, and there will be access to public transit.
- Small unincorporated areas will be well-planned through community-driven planning processes so that community character is preserved and adequate public services and facilities are provided. Rural residential development will be limited and will strive to be compatible with agricultural and environmental uses, and will address wildfire risks and public services needs.
- Agriculture and open space will continue to dominate Butte County's landscape and be an important part of the County's culture and economy. Existing agricultural areas will be maintained and an array of agricultural services will support agriculture while providing new jobs to Butte County residents.

The General Plan 2030 includes an optional Water Resources Element in addition to the mandatory elements of Land Use, Housing, Economic Development, Agriculture, Circulation, Conservation and Open-space, Health and Safety and Public Facilities and Services. In adopting

the Water Resources Element, the General Plan 2030 recognized the importance and interrelationship between land use and water resources management. The General Plan 2030 Water Resources Element has six goals:

1. Maintain and enhance water quality;
2. Ensure an abundant and sustainable water supply to support all uses in Butte County;
3. Effectively manage groundwater resources to ensure a long-term water supply for Butte County;
4. Promote water conservation as an important part of a long-term and sustainable water supply;
5. Protect water quality through effective storm water management, and;
6. Improve stream bank stability and protect riparian resources.

Key Water Resources Element policies include:

- W-P1.4 Where appropriate, new development shall be Low Impact Development (LID) that minimizes impervious area, minimizes runoff and pollution and incorporates best management practices.
- W-P2.1 The County supports solutions to ensure the sustainability of community water supplies.
- W-P2.3 Water resources shall be planned and managed in a way that relies on sound science and public participation.
- W-P2.5 The expansion of public water systems to areas identified for future development on the General Plan land use map is encouraged.
- W-P2.6 The County supports water development projects that are needed to supply local demands.
- W-P2.8 The County supports Area of Origin water rights, the existing water right priority system and the authority to make water management decisions locally to meet the county's current and future needs, thereby protecting Butte County's communities, economy and environment.
- W-P2.9 Applicants for new major development projects, as determined by the Department of Development Services, shall demonstrate adequate water supply to meet the needs of the project, including an evaluation of potential cumulative impacts to surrounding groundwater users and the environment.
- W-P3.1 The County shall continue to ensure the sustainability of groundwater resources, including groundwater levels, groundwater quality and avoidance of land subsidence, through a basin management objective program that relies on management at the local level, utilizes sound scientific data and assures compliance.
- W-P3.2 Groundwater transfers and substitution programs shall be regulated to protect the sustainability of the County's economy, communities and ecosystem, pursuant to Chapter 33 of the Butte County Code.
- W-P3.3 The County shall protect groundwater recharge and groundwater quality when considering new development projects.
- W-P4.1 Agricultural and urban water use efficiency shall be promoted.

- W-P4.2 Water conservation efforts of local Resource Conservation Districts, the Natural Resource Conservation Service and irrigation districts should be coordinated.
- W-P4.3 The County shall work with municipal and industrial water purveyors to implement water conservation policies and measures.
- W-P4.4 Opportunities to recover and utilize wastewater for beneficial purposes shall be promoted and encouraged.
- W-P4.5 The use of reclaimed wastewater for non-potable uses shall be encouraged, as well as dual plumbing that allows graywater from showers, sinks and washers to be reused for landscape irrigation in new developments.
- W-P4.6 New development projects shall adopt best management practices for water use efficiency and demonstrate specific water conservation measures.
- W-P5.2 New development projects shall identify and adequately mitigate their water quality impacts from stormwater runoff.
- W-P5.3 Pervious pavements shall be allowed and encouraged where their use will not hinder mobility.

Implementation of the Wyandotte Creek GSP will provide for sustainable groundwater management and is not anticipated to affect water supply assumptions in the General Plans.

Information on the Butte County General Plan 2030 and related documents can be found at www.buttegeneralplan.net.

City of Oroville

Permitting of New Wells

The construction, repair or destruction of wells is subject to permitting by the Butte County Division of Environmental Health pursuant to Chapter 23B of the Butte County Code, Water Wells. The chapter provides minimum procedures for the proper construction of water wells and for the proper destruction of abandoned wells in order to ensure that water obtained from wells within the County of Butte will be suitable for the purposes for which used and that wells constructed or abandoned pursuant to this chapter will not cause pollution or impairment of the quality of the groundwater within the county. An additional purpose is to reduce potential well interference problems to existing wells and potential adverse impacts to the environment which could be caused by the construction of new wells or the repair or deepening of existing wells where a permit is required. Important provisions of the chapter include:

- The construction, repair, reconstruction, deepening, abandonment and destruction of wells in Butte County must follow the standards in Bulletin 74-81 and its supplement bulletin 74-90, Water Well Standards, State of California.
- After July 25, 1996, the pumping capacity of a new well cannot be greater than fifty (50) gallons per minute per acre to reasonably serve the overlying land, including contiguous parcels of land under the same ownership as the land upon which the well is located.

Wyandotte Creek

GROUNDWATER SUSTAINABILITY
AGENCY

- Wells can only be drilled by a person licensed to drill water wells pursuant to the provisions of Business and Professions Code section 7000 et seq. possessing a C-57 water well contractors license required by section 13750.5 of the California Water Code.
- Domestic well owners are required to insure that a new well will operate properly assuming a repeat of the groundwater conditions experienced during the period 1987 through 1994 in the area in which the new well is located.
- Well drillers reports must be filed with Butte County as well as with the Department of Water Resources.
- Notification of well permit applications are required in specific instances to adjoining landowners and/or local agencies with an adopted groundwater management plan pursuant to part 2.75 of division 6 of the California Water Code (commencing at section 10750). Landowners and/or local agencies are provided thirty (30) days to provide comments prior to permit issuance.
- Wells with a casing diameter greater than eight (8) inches are required to be drilled at specific distances away from existing wells.
- In addition to well sealing requirements specified within state well standards bulletin 74-81 and bulletin 74-90, the seal shall be extended five (5) feet into the first consolidated formation encountered below fifteen (15) feet to a maximum required sealing depth of fifty (50) feet.

Land Use Plans Outside of the Basin

The Yuba County General Plan and zoning ordinance is the only land use plan adjacent to the Wyandotte Creek subbasin. The Yuba County General Plan will not have any impact on the Wyandotte Creek GSP to achieve sustainable groundwater management. The Wyandotte Creek GSA will continue to monitor amendments to the Yuba County General Plan.

From: Duke Sherwood <duke@dukesherwoodcontracting.com>

To: Mariana Rivera-Torres <mrivertorres@cbi.org>

Sent: 3/10/2021 10:39 AM

Subject: Possible locations for groundwater recharge

Mariana,

Please find the attached list and locations of possible land owners in the Wyandotte and Wyman drainages for possible ground water recharge participants.

Thank you,

Duke Sherwood

Duke Sherwood Contracting, Inc.

P: 530-846-2710

F: 530-846-6760

C: 530-624-5642

3/29/21

4



Duke Sherwood Contracting, Inc.

General Engineering Contractor #327827
495 Stimpson Road • Oroville, CA 95965 • (530) 533-2710

3-10-21

Mariana,

I have compiled a short list of possible property owners that could possibly be interested in "Artificial Groundwater Recharge". There are obviously many more locations but the following list are those that I know personally and or professionally or both. With different types of artificial recharge such as injection wells, infiltration basins, and ponds and these properties are of different sizes that may accommodate some type of recharge.

Wyandotte Creek Drainage:

The upper end, off of Alta Arosa Dr. Duke Sherwood
At the bottom end of the foothills east of Palermo/Honcut Rd. Cynthia Daley
The West side of Palermo/Honcut Rd. Pacific Coast Producers
West of Pacific Coast Producers and North of Cox Lane. Jeff Mardesich
South of Cox Lane. Bobette Vassar

Wyman Ravine Drainage:

The upper end Mooretown Rancheria, Sean Miller
South of Palermo Rd. Doug Wheeler
West of Lone Tree Rd. Jace and Susan Rash
North of Cox Lane Kyle Daley
South of Cox Lane Jim McCarten
South of Stimpson Rd. Gary Phillips, Duke Sherwood, Aaron Weinzinger

All of the parties listed would be considered part of agriculture related endeavors.

Hopefully, this list will give us a start in collecting interested parties that we could expand upon.

Thank You,

Duke



From: Peterson, Kelly

Sent: Thursday, March 11, 2021 12:54 PM

To: Peterson, Kelly <KPeterson@buttecounty.net>

Subject: SGMA Overview Joint Webinar from DWR and the State Water Resources Control Board

Good Afternoon,

On behalf of the Wyandotte Creek GSA Management Committee, I am sending you a link to a recent webinar: "Joint DWR-State Water Board General SGMA Webinar on Groundwater Sustainability Planning" <https://www.youtube.com/watch?v=TeYaZB8MT3w>

We encourage you to review this as it is a great overview to understand what to expect from both DWR and the SWRCB once a GSP is submitted, the role of each agency and other important information regarding SGMA and GSPs, all in just under 2 hours.

This virtual General Sustainable Groundwater Management Act (SGMA) Webinar on groundwater sustainability planning was hosted by the DWR and the State Water Resources Control Board. It includes an update on how the State is moving forward with groundwater sustainability plan (GSP) evaluations, the timeline and approach to releasing assessments for GSPs submitted to DWR by Jan. 31, 2020, and an overview of state assistance to support locals moving forward with SGMA implementation.

We hope you find it useful, please share with anyone else you think may be interested.

Thanks,

Kelly Peterson, Water Resources Scientist
Butte County Department of Water and Resource Conservation
308 Nelson Avenue
Oroville, CA 95965
Office: (530) 552-3595
<https://www.buttecounty.net/waterresourceconservation/Home>

Please click [HERE](#) to sign up for regular email updates from our Department.

Kelly Peterson, Water Resources Scientist
Butte County Department of Water and Resource Conservation
308 Nelson Avenue
Oroville, CA 95965
Office: (530) 552-3595
<https://www.buttecounty.net/waterresourceconservation/Home>

Please click [HERE](#) to sign up for regular email updates from our Department.

Begin forwarded message:

Wyandotte Creek

GROUNDWATER SUSTAINABILITY
AGENCY

From: Kathy Brazil <fewzil@att.net>

Sent: Monday, March 29, 2021 10:22 AM

To: BCWater <BCWaterFrontDeskHG@buttecounty.net>

Subject: Re: Wyandotte Creek Subbasin Advisory Committee Agenda for April 1, 2021

ATTENTION: This message originated from outside **Butte County**. Please exercise judgment before opening attachments, clicking on links, or replying.

Please share this letter with all the Wyandotte Creek GSA members.

Dear Committe;

I have not been able to attend any WCGSA recent meetings, and I still want to ask the committee to include Ruddy Creek and all its the hydrology details to be included in all discussions of the Wyandotte Creek Groundwater Sustainability Agency. It is an intermittent creek that flows through Thermalito. If your committee is not familiar with the creek, please view it's streambanks in person at 14th and Feather Ave and Biggs Ave and 16th St. It has documented flooding issues. I have sent photos and so far the maps I have received from the County do not include the streambank riparian data details of the Fish and Wildlife Agency and Army Corp of Engineer. Please send me any current discussions and information that includes the the Ruddy Creek waterway, as it flows within the Wyandotte Groundwater Basin. I read through these Correspondence pages 1-3:

Butte County General Plan 2030

The Butte County General Plan 2030 was adopted by the Butte County Board of Supervisors in October 2010. The General Plan 2030 identifies the goals, policies and actions governing land use in the unincorporated portions of Butte County. The General Plan 2030 reflects the community desire to conserve and enhance the legacy of their forebears, namely, sustainable development. To this end, the General Plan 2030 envisions and supports a Butte County in 2030 where:

- Urban development will be primarily centralized within and adjacent to the existing municipal limits and larger unincorporated communities. Urban development will have efficient, reliable public facilities and infrastructure. Employment centers and a range of services will be located near residential areas so that people spend less time in their cars. Residential communities will be walkable, bicycle facilities will be provided, and there will be access to public transit.
- Small unincorporated areas will be well-planned through community-driven planning processes so that community character is preserved and adequate public services and facilities are provided. Rural residential development will be limited and will strive to be compatible with agricultural and environmental uses, and will address wildfire risks and public services needs.
- Agriculture and open space will continue to dominate Butte County's landscape and be an important part of the County's culture and economy. Existing agricultural areas will be maintained and an array of agricultural

services will support agriculture while providing new jobs to Butte County residents.

The General Plan 2030 includes an optional Water Resources Element in addition to the mandatory elements of Land Use, Housing, Economic Development, Agriculture, Circulation, Conservation and Open-space, Health and Safety and Public Facilities and Services. In adopting 3/26/21 2 the Water Resources Element, the General Plan 2030 recognized the importance and interrelationship between land use and water resources management.

The General Plan 2030 Water Resources Element has six goals: 1. Maintain and enhance water quality; 2. Ensure an abundant and sustainable water supply to support all uses in Butte County; 3. Effectively manage groundwater resources to ensure a long-term water supply for Butte County; 4. Promote water conservation as an important part of a long-term and sustainable water supply; 5. Protect water quality through effective storm water management, and; 6. Improve stream bank stability and protect riparian resources. Key Water Resources Element policies include: > W-P1.4 Where appropriate, new development shall be Low Impact Development (LID) that minimizes impervious area, minimizes runoff and pollution and incorporates best management practices. > W-P2.1 The County supports solutions to ensure the sustainability of community water supplies. > W-P2.3 Water resources shall be planned and managed in a way that relies on sound science and public participation. > W-P2.5 The expansion of public water systems to areas identified for future development on the General Plan land use map is encouraged. > W-P2.6 The County supports water development projects that are needed to supply local demands. > W-P2.8 The County supports Area of Origin water rights, the existing water right priority system and the authority to make water management decisions locally to meet the county's current and future needs, thereby protecting Butte County's communities, economy and environment. > W-P2.9 Applicants for new major development projects, as determined by the Department of Development Services, shall demonstrate adequate water supply to meet the needs of the project, including an evaluation of potential cumulative impacts to surrounding groundwater users and the environment. > W-P3.1 The County shall continue to ensure the sustainability of groundwater resources, including groundwater levels, groundwater quality and avoidance of land subsidence, through a basin management objective program that relies on management at the local level, utilizes sound scientific data and assures compliance. > W-P3.2 Groundwater transfers and substitution programs shall be regulated to protect the sustainability of the County's economy, communities and ecosystem, pursuant to Chapter 33 of the Butte County Code. > W-P3.3 The County shall protect groundwater recharge and groundwater quality when

considering new development projects. > W-P4.1 Agricultural and urban water use efficiency shall be promoted. 3/26/21 3 > W-P4.2 Water conservation efforts of local Resource Conservation Districts, the Natural Resource Conservation Service and irrigation districts should be coordinated. > W-P4.3 The County shall work with municipal and industrial water purveyors to implement water conservation policies and measures. > W-P4.4 Opportunities to recover and utilize wastewater for beneficial purposes shall be promoted and encouraged. > W-P4.5 The use of reclaimed wastewater for non-potable uses shall be encouraged, as well as dual plumbing that allows graywater from showers, sinks and washers to be reused for landscape irrigation in new developments. > W-P4.6 New development projects shall adopt best management practices for water use efficiency and demonstrate specific water conservation measures. > W-P5.2 New development projects shall identify and adequately mitigate their water quality impacts from stormwater runoff. > W-P5.3 Pervious pavements shall be allowed and encouraged where their use will not hinder mobility.

Implementation of the Wyandotte Creek GSP will provide for sustainable groundwater management and is not anticipated to affect water supply assumptions in the General Plans. Information on the Butte County General Plan 2030 and related documents can be found

at www.buttegeneralplan.net.

I question why the wording says an "optional Water Resources Element"? Water is not an optional issue. How is this Wyandotte Creek GSA committee assuring that water is a :required resource element"? See #6 highlighted above, this directly addresses Ruddy Creek and it's habitat and riparian streambanks. I look forward to hearing that the watershed of the live and viable Ruddy Creek stream is included in all related discussions of the Wyandotte Creek Groundwater Sustainability Basin committee.

Kathy Brazil

On Monday, March 29, 2021, 08:59:22 AM PDT, Wyandotte Creek Groundwater Sustainability Agency <bcwater@buttecounty.net> wrote:

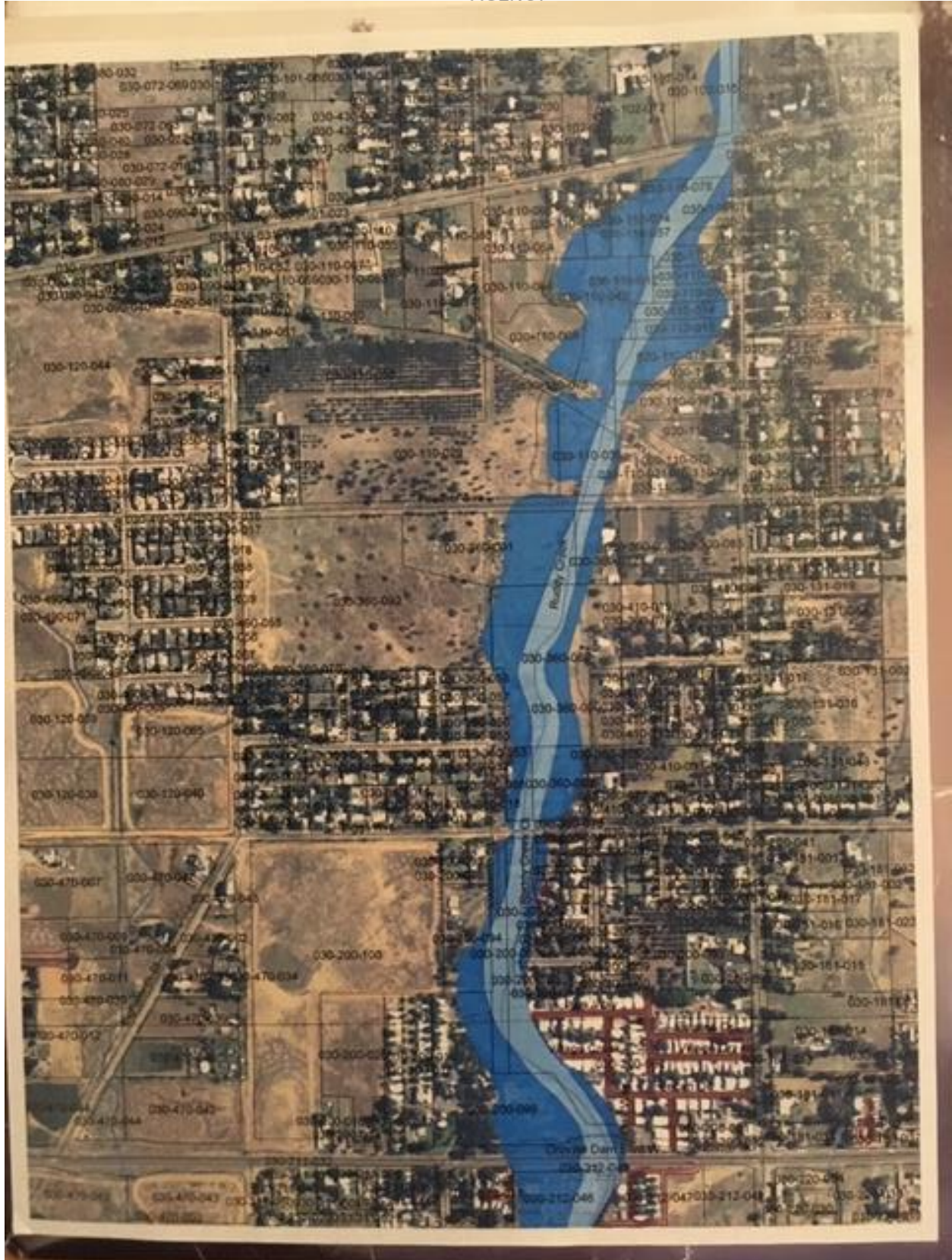
Wyandotte Creek

GROUNDWATER SUSTAINABILITY
AGENCY



Wyandotte Creek

GROUNDWATER SUSTAINABILITY
AGENCY



Wyandotte Creek

GROUNDWATER SUSTAINABILITY
AGENCY

