



# Wyandotte Creek Subbasin Groundwater Sustainability Plan (GSP) | **Public Draft GSP**

October 20, 2021 Public Workshop

<https://www.wyandottecreekgsa.com>

# Zoom Meeting Orientation

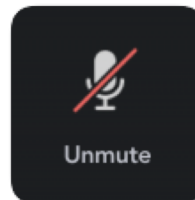
## Technical Difficulties?

- Zoom Chat → Host
- Email: Dorit Price-Levine at [dorit@cbi.org](mailto:dorit@cbi.org)

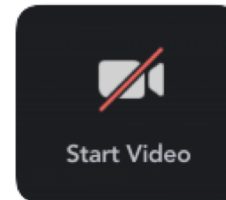
## Instructions for Getting Started:

- ❑ Use only one audio source – either computer or phone.
- ❑ Wear headsets / earbuds to cut down on ambient noise.
- ❑ Please **MUTE** yourself at all times, except when speaking.
- ❑ **(Optional) Rename yourself** with your Full Name and Affiliation (find option via “Participants” tab and “More ▾” button next to your name)
- ❑ **Orient yourself** to Zoom meeting controls:

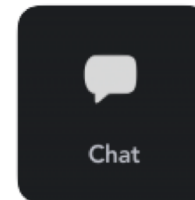
Unmute/Mute



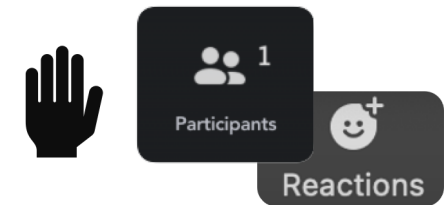
Start Video



Zoom Chat



Raise Hand (via Participants or Reactions)



Meeting materials available on the website:  
<https://www.wyandottecreekgsa.com>

## COMMON TERMS

During Q&A and  
Comment Period:  
Verbal Questions?

Raise Hand 



If participating through Zoom:

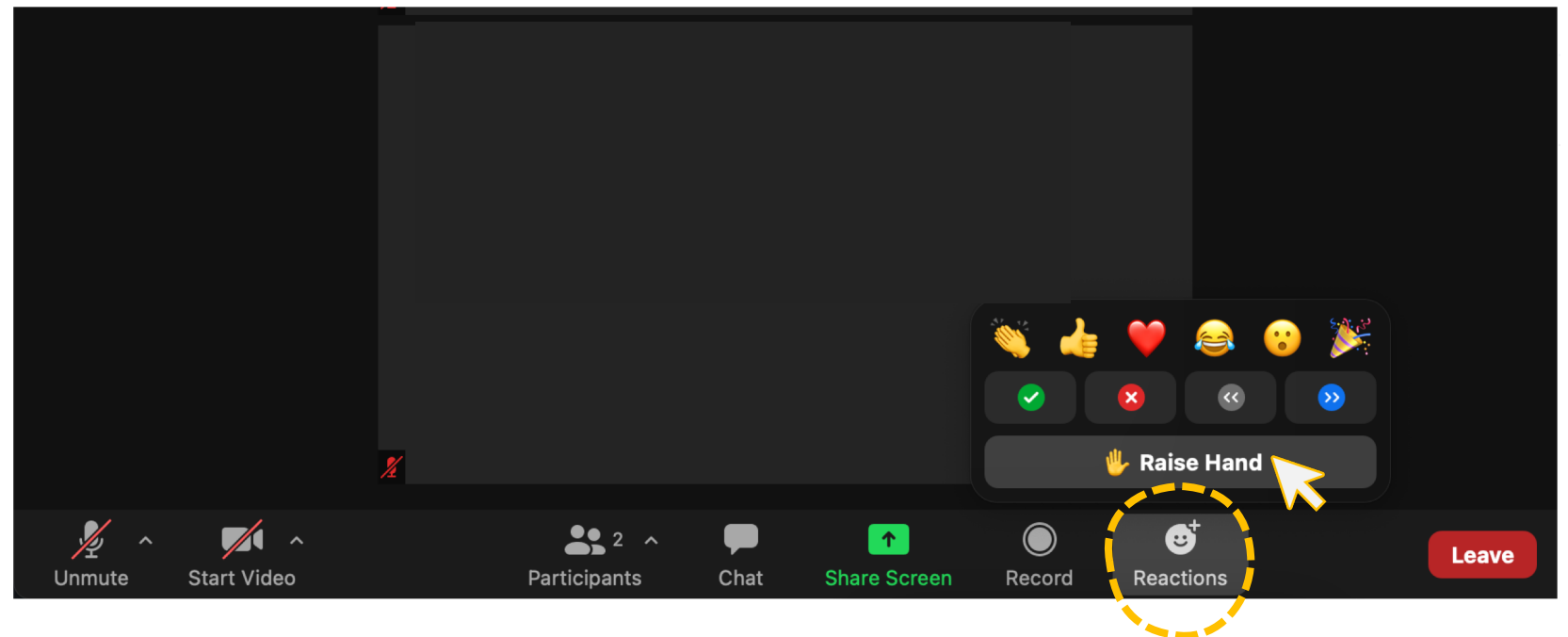
 **“Raise Hand”** to speak



If dialing in by phone only:

Press **\*9** to “Raise Hand”

We will let you know when it is your turn to speak and can unmute yourself  
*(Phone-Only Participants – Press \*6 to unmute/mute)*



*(older versions of Zoom may require using the Participants button to find the Raise Hand icon)*



“Raise Hand” for Verbal Questions and Comments



Please keep yourself on MUTE when not speaking



Zoom Chat for Tech Support and to submit written comments to be read aloud during Q&A/comment period (Note: only the host will see your messages)



Take Space & Make Space



Technical Difficulties? Use Zoom Chat Box | Email Dorit Price-Levine at [Dorit@cbi.org](mailto:Dorit@cbi.org)

# Virtual Participation in the Workshop



Raise hand for verbal questions and comments and wait to be called to the microphone.



Please only make comments at the microphone to allow virtual participants are able to hear.



Provide written remarks on provided comments cards.



The facilitator will alternate between on-line and in-person groups of commenters.

# In-person Participation in the Workshop

Note: The meeting will be recorded and posted to the website: [www.wyandottecreekgsa.com](http://www.wyandottecreekgsa.com)

# Agenda



6:00 – Welcome & Introductions



6:15 – Background & SGMA 101

Sustainable Groundwater  
Management Act (SGMA) + Brief  
Q&A



6:35 – Groundwater Sustainability  
Plan (GSP) Overview

Key content overview; GSP timeline;  
How to comment + Brief Q&A



7:30 – Public Comment + General Q&A



By 7:55 – What's Next and Wrap Up

# Welcome & Introductions



- **Facilitation Team**
- **GSA Management Committee**
- **GSA Board Members**
- **Wyandotte Creek Subbasin Advisory Board Members**
- **Technical Consultants**



# Background & SGMA 101

Tania Carlone, Facilitator, Consensus Building Institute (CBI)



# Drought-Inspired Law: Manage Groundwater

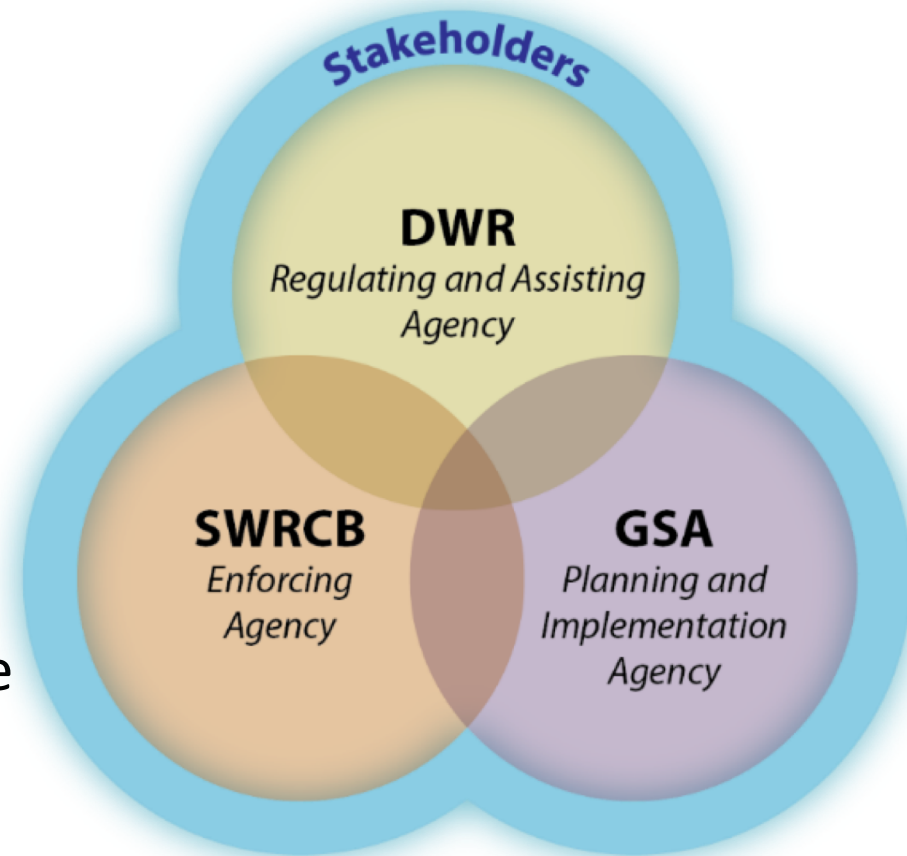
2014: Sustainable Groundwater Management Act (SGMA)

Created a framework to:

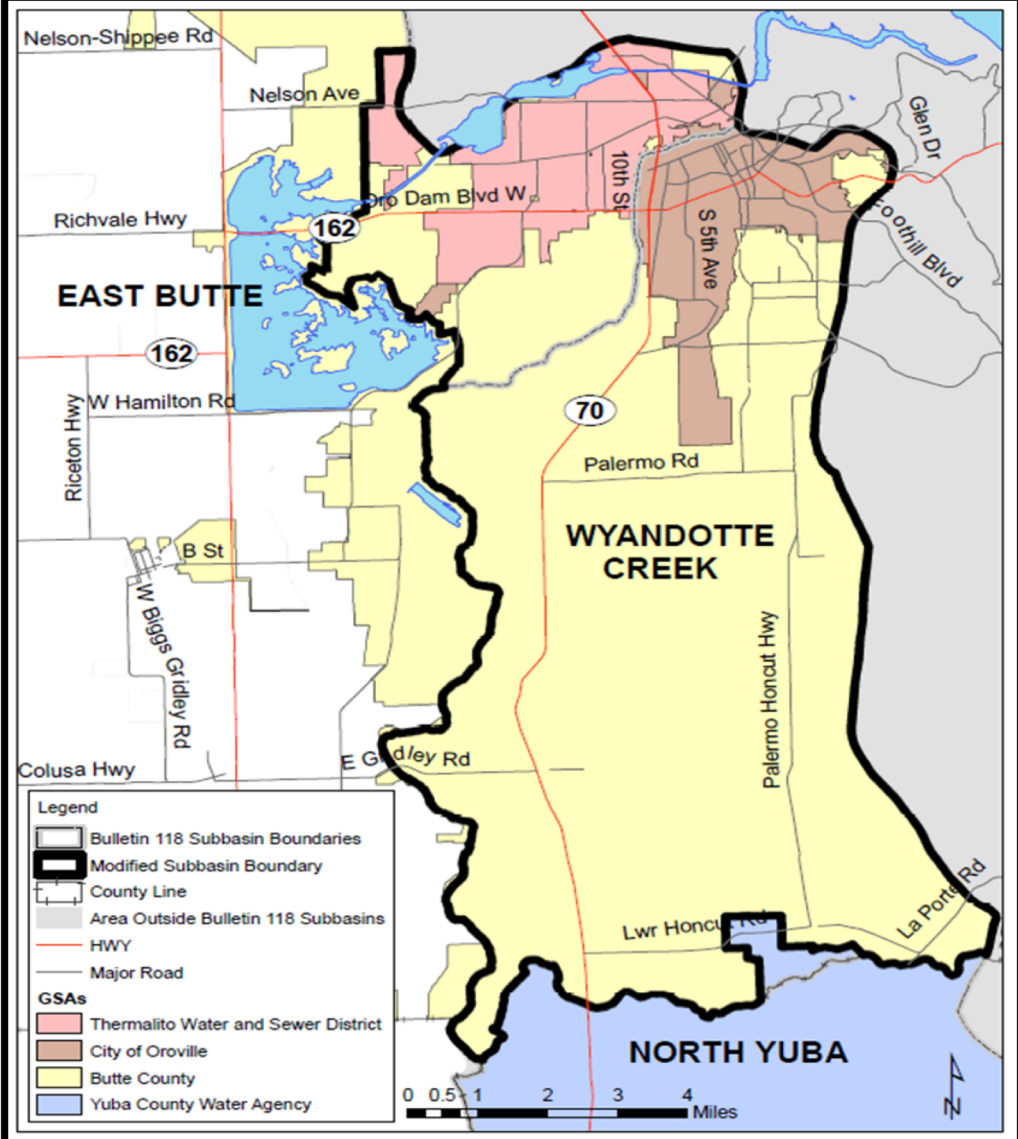
- Assess subbasin conditions
- Craft long-term plans
- Implement solutions
- Achieve sustainability by 2042 (20 years)

Carrot vs. Stick:

- Local control if plan is credible
- State intervention (high costs) if plan inadequate



# SGMA is a Statewide Effort



# The Road to Sustainability

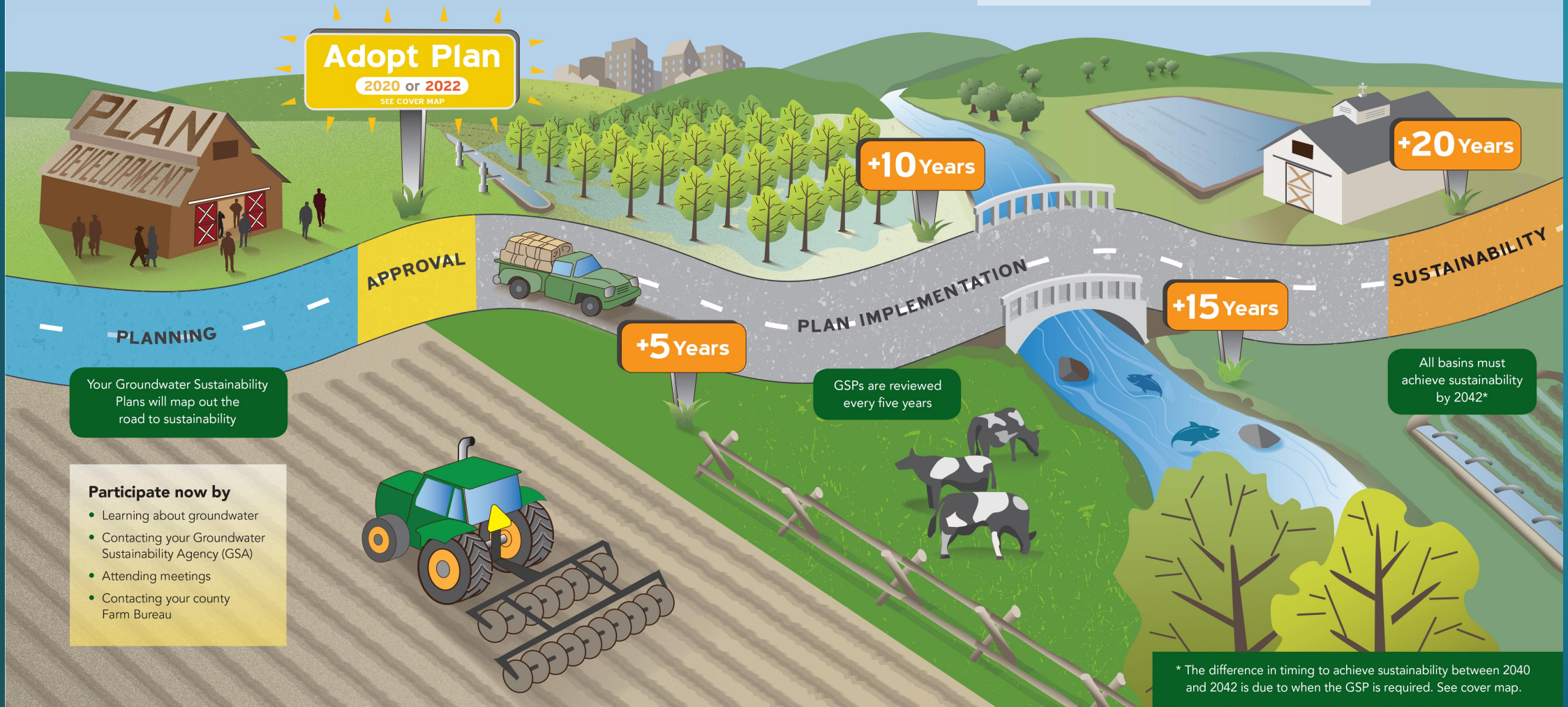
## Learn and Engage!

Participate now to represent your interest. SGMA stresses local group formation, local plans and local management.

SGMA plans will reflect local conditions and can include local solutions. Once approved by the state, your local plan represents a commitment to future actions.

### Let's be clear:

- SGMA will affect your groundwater pumping
- SGMA establishes new responsibilities to share groundwater
- SGMA will change how we use land and water
- SGMA does not change water rights



### Participate now by

- Learning about groundwater
- Contacting your Groundwater Sustainability Agency (GSA)
- Attending meetings
- Contacting your county Farm Bureau

\* The difference in timing to achieve sustainability between 2040 and 2042 is due to when the GSP is required. See cover map.

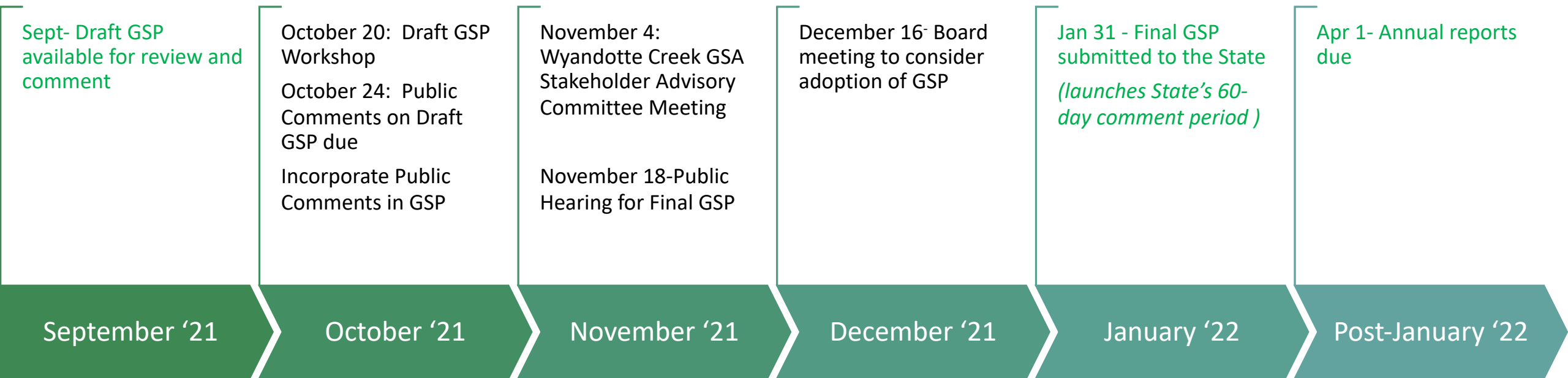


What's Next?

# GSP Development → Implementation Timeline

## Public Input Opportunities

*Timeline for Wyandotte Creek Subbasin Groundwater Sustainability Plan Development*



# How To Comment on the Draft GSP

Go to:

[www.wyandottecreekgsa.com/draft-groundwater-sustainability-plan-gsp](http://www.wyandottecreekgsa.com/draft-groundwater-sustainability-plan-gsp)

to view the Draft GSP and learn how to submit comments.

Public comments are **due by October 24, 2021, 11:59 p.m.**

- **Submit comments through one of two methods:**
- **By email to:** [wyandotteGSA@buttebasingsgroundwater.org](mailto:wyandotteGSA@buttebasingsgroundwater.org) To better organize public comments, we are requesting that commenters use a comment tracking sheet. Visit [www.wyandottecreekgsa.com/draft-groundwater-sustainability-plan-gsp](http://www.wyandottecreekgsa.com/draft-groundwater-sustainability-plan-gsp) to access the comment form.
- **By mail to: Department of Water & Resource Conservation**  
Butte County Department of Water & Resource Conservation  
RE: Wyandotte Creek Subbasin GSP  
308 Nelson Ave., Oroville, CA, 95965



*For more information:*

<https://www.wyandottecreekgsa.com>

# Clarifying Questions?

## Webinar Options

“Raise Hand” to speak

Zoom Chat Host



## In-Person Options

Raise hand to speak and  
approach the  
microphone podium

## Calling-In Options:

\*9 to “Raise Hand”  
(\*6 to *Unmute/Mute*)

### COMMON TERMS

SGMA (“*Sigma*”): Sustainable Groundwater Management Act • GSA: Groundwater Sustainability Agency • GSP: Groundwater Sustainability Plan

# Thank you!

Visit <https://www.wyandottecreekgsa.com> for more information.

