



**Wyandotte Creek
Groundwater Sustainability Agency
Agenda Transmittal**

Agenda Item: 5

Subject: SGM Grant Projects Progress Update

Contact: Becky Fairbanks

Phone: 530-552-3587

Meeting Date: 11/21/2024

Regular Agenda

Department Summary:

Background:

Wyandotte Creek GSA was awarded \$5.5M for their proposed projects through the Department of Water Resources Sustainable Groundwater Management (SGM) Grant. The Board approved the approach to partner with Butte County Water and Resource Conservation Department to lead portions of the grant funded work.

The Board will receive a presentation on the progress of the projects.

Fiscal Impact: None

Staff Recommendations: Information only



Sustainable Groundwater Management Projects Update

Becky Fairbanks
Wyandotte Creek GSA Board
November 21, 2024

Background

- ▶ California Department of Water Resources (DWR) Sustainable Groundwater Management Implementation Grant
 - ▶ Wyandotte Creek Groundwater Sustainability Agency (GSA) awarded \$5.5M

- ▶ Wyandotte Creek GSA Board approved the approach to partner with Butte County Department of Water and Resource Conservation to lead portions of the grant funded work.

Projects Implemented through March 2026

- ▶ Data Gap Identification and Data Improvement
- ▶ Outreach Program
- ▶ Regional Conjunctive Use Program
- ▶ Project Management and Grant Administration
- ▶ Data Management System Enhancements
- ▶ Inter-basin Coordination Analysis and Modeling



Wyandotte Creek
GROUNDWATER SUSTAINABILITY
AGENCY



Data Gap Identification and Data Improvement

Why it matters:

- **Accurate data** is essential for making informed decisions about water resources.

Our plan:

- Invest in **new monitoring sites** and **equipment** for more precise data on surface and groundwater conditions.
- **Better understand the system** and amend the Wyandotte Creek Groundwater Sustainability Plan (GSP) over time to respond to new data and feedback from DWR.



Wyandotte Creek
GROUNDWATER SUSTAINABILITY
AGENCY



Data Gap Identification & Data Improvement

Updates on Tasks during 4/1/24 - 9/30/24:

- Project is on track and within budget.

Consultant Progress on Tasks Includes:

- Began identifying areas within the subbasin for potential new monitoring network sites. Coordination with Butte County to understand existing network.
- Developed approach to classify shallow and deep monitoring wells to support monitoring network enhancements. Analysis underway.
- In process of reviewing the GSP and DWR determination letter to identify data gaps and areas of refinement.

Wyandotte Creek
GROUNDWATER SUSTAINABILITY
AGENCY



Data Gap Identification & Data Improvement

Recent and Next Steps:

- Finalize draft map of proposed locations for new monitoring sites.
- Present the map of proposed locations to the Wyandotte Creek Advisory Committee (WAC) on November 7th for discussion and review.
- Present recommendations for proposed new monitoring sites to the Wyandotte Creek GSA Board for approval.

Wyandotte Creek
GROUNDWATER SUSTAINABILITY
AGENCY



Outreach

Updates on Tasks during 4/1/24 - 9/30/24:

- Project is on track and within budget.

Consultant Progress on Tasks Includes:

- Created a style guide to promote consistency in outreach materials.
- Began creating project-specific outreach plans.

Upcoming:

- Finalize project-specific outreach plans.
- Develop and design outreach materials for projects.



Regional Conjunctive Use Project

Focuses on reducing the dependency of the subbasin on groundwater through:

- Intra-basin water exchange study
- Agricultural Surface Water Supplies Study
- Precision Irrigation Efficiency Pilot Program





Regional Conjunctive Use Project

Updates on Tasks during 4/1/24 - 9/30/24:

- Project is on track and within budget.

Consultant Progress on Tasks Includes:

- Intra-basin water exchange feasibility –
 - Met with Thermalito Water and Sewer District (TWSD) and South Feather Water and Power Agency (SFWPA)
 - Toured SFWPA facilities and service area
- Surface water in lieu of groundwater –
 - Combining efforts with West Yost on the Palermo drainage plan
- Precision Irrigation Program –
 - Formed an Ad Hoc Committee
 - Mobile Irrigation Lab

Wyandotte Creek
GROUNDWATER SUSTAINABILITY
AGENCY



Regional Conjunctive Use Project

Next steps:

- 11/7/24 – Surface Water Supplies - Public Engagement meeting
- Schedule Precision Irrigation Ad Hoc Committee meeting
- Schedule site visits



Wyandotte Creek
GROUNDWATER SUSTAINABILITY
AGENCY



Project Management & Grant Administration

Updates on Tasks during 4/1/24 - 9/30/24:

- Project is on track and within budget

Progress on Tasks Includes:

- Hosted a big team kickoff meeting with all consultants
- Conduct regular check-in meetings with each consulting team
- Filed environmental forms
- Submitted two quarterly invoices and progress reports to the Department of Water Resources



- ▶ **Data Management System Enhancements (Butte County)**
- ▶ **Inter-basin Coordination Analysis and Modeling (Butte County)**

Project Manager:
Christina Buck, Asst. Director
Dept. of Water and Resource Conservation
Butte County



Wyandotte Creek
 GROUNDWATER SUSTAINABILITY
 AGENCY





Data Management System Enhancements

Updates on Tasks during 4/1/24 - 9/30/24:

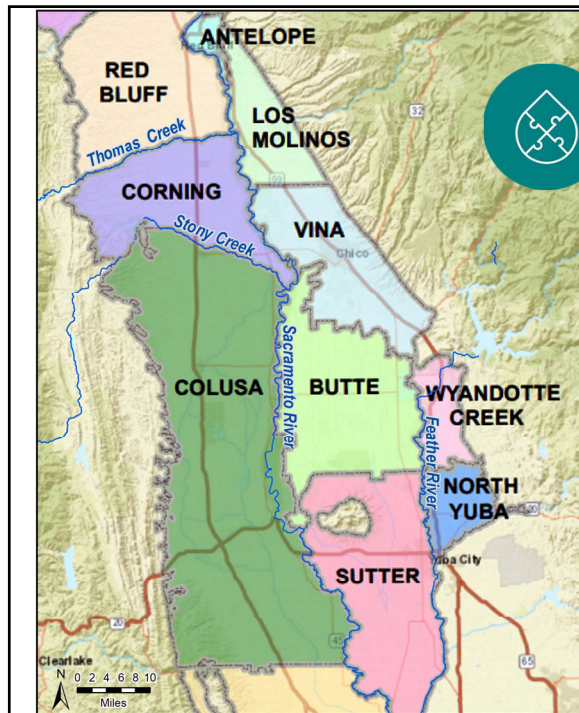
- Project is on track and within budget.

Consultant Progress on Tasks Includes:

- Staff working with consultant team to communicate data management and reporting needs
- Consultants have created initial examples of data reports with ESRI and PowerBI software

Next steps:

- Consultant continue to refine data report formats and functionality
- Additional data types considered (ex. water quality, model outputs)



Inter-basin Coordination Analysis and Modeling

- Better understand the system at the boundaries
 - Rivers/streams connected to groundwater system
 - Water Budgets
 - Monitoring wells
- Refine modeling tools: Butte Basin Groundwater Model
- Will support coordination efforts with information and data





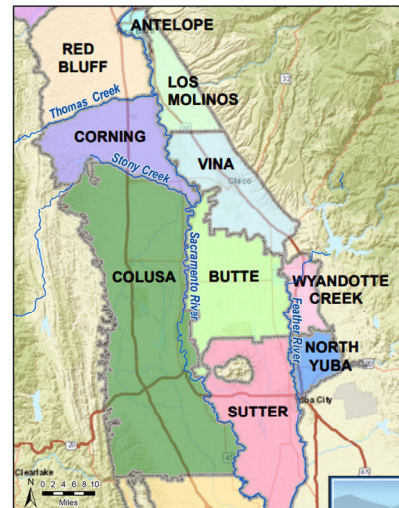
Inter-basin Coordination Analysis and Modeling

Updates on Tasks during 4/1/24 - 9/30/24:

- Project is within budget and on schedule

Consultant Progress on Tasks Includes:

- Gathering relevant data, model files, and reports for review
- Compiling contents of GSPs along Feather River Corridor and review existing available information
- Initial meetings with North Yuba to understand available data
- Evaluating possible model refinements to be made to the Butte Basin Groundwater Model



Inter-basin Coordination Analysis and Modeling

Recent and Next Steps

- Met with Sutter subbasin staff to gather data and understand their current efforts
- Discussion and update to Butte County Technical Advisory Committee on November 19.
- Continue pulling together information from GSPs along both North Sacramento River and Feather River Corridors
- Working on BBGM revisions and evaluating model outputs at boundaries (early 2025)

